

Техническое описание продукта

HQI-BT 400 W/D PRO

POWERSTAR HQI-T | Металлогалогенные лампы с кварцевой горелкой для закрытых светильников



- Factories and workshops Sports halls and multi-purpose halls Industrial installations Docks and port facilities Marshaling yards, container transshipment facilities Buildings, monuments, bridges Approved only for use in enclosed luminaires Outdoor applications only in suitable luminaires

- Output of up to 400 W High efficiency Long lifetime E40 screw base for simple lamp handling UV values significantly below the maximum permitted thresholds to IEC 61167 thanks to UV filter



Техническое описание продукта

Technical data

Электрические параметры

ZLDV_Nominal wattage [AGGR]	400.00 W
ZLDV_Rated wattage [AGGR]	420.00 W
ZLDV_Lamp current [AGGR]	4.0 A
ZLDV_PFC capacitor at 50 Hz [AGGR]	45 μ F ¹⁾
ZLDV_Nominal voltage [AGGR]	115 V
ZLDV_Ignition voltage [AGGR]	4.0 kVp;5.0 kVp ²⁾
ZLDV_Nominal current [AGGR]	4 A

¹⁾ At rated voltage and $\cos \varphi \geq 0.9$

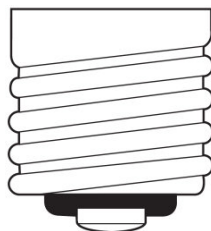
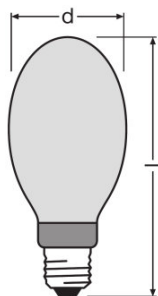
²⁾ Minimum;Maximum

Фотометрические данные

ZLDV_Rated lamp efficacy (standard condition) [AGGR]	81 lm/W
ZLDV_Rated luminous flux [AGGR]	34000 lm
ZLDV_Color rendering index Ra [AGGR]	92
ZLDV_Color temperature [AGGR]	5500 K
ZLDV_Light color [AGGR]	955
ZLDV_Rated LLMF at 2,000 h [AGGR]	0.92
ZLDV_Rated LLMF at 4,000 h [AGGR]	0.90
ZLDV_Rated LLMF at 6,000 h [AGGR]	0.87
ZLDV_Rated LLMF at 8,000 h [AGGR]	0.85
ZLDV_Rated LLMF at 12,000 h [AGGR]	0.81
ZLDV_UV protection [AGGR]	Yes
ZLDV_Nominal luminous flux [AGGR]	34000 lm
ZLDV_Rated color temperature [AGGR]	5500 K
ZLDV_Luminous flux [AGGR]	34000 lm

Техническое описание продукта

Размеры и вес



E40
IEC 7004-24
DIN 49625

ZLDV_Diameter [AGGR]	62.0 mm
ZLDV_Length [AGGR]	285.0 mm
ZLDV_Light center length (LCL) [AGGR]	175.0 mm
ZLDV_Product weight [AGGR]	200.00 g
ZLDV_Outer bulb [AGGR]	BT62
ZLDV_Overall length [AGGR]	285.0 mm

Температуры и условия управления

ZLDV_Maximum permitted outer bulb temperature [AGGR]	500 °C
ZLDV_Maximum permitted base edge temperature [AGGR]	250 °C

Срок службы

ZLDV_Rated lamp survival factor at 2,000 h [AGGR]	0.96
ZLDV_Rated lamp survival factor at 4,000 h [AGGR]	0.94
ZLDV_Rated lamp survival factor at 6,000 h [AGGR]	0.93
ZLDV_Rated lamp survival factor at 8,000 h [AGGR]	0.88
ZLDV_Rated lamp survival factor at 12,000 h [AGGR]	0.81
ZLDV_Lifespan B50 [AGGR]	16000 h

Дополнительные данные

ZLDV_Base (standard designation) [AGGR]	E40
ZLDV_Product remark [AGGR]	With NAV control gear
ZLDV_Design / version [AGGR]	clear
ZLDV_Mercury content [AGGR]	59.0 mg
Утилизация по WEEE	Да
ZLDV_Mercury-free [AGGR]	No

Техническое описание продукта

Возможности / мощности

ZLDV_Dimmable [AGGR]	No
ZLDV_Burning position [AGGR]	Any
ZLDV_Enclosed luminaire required [AGGR]	Yes

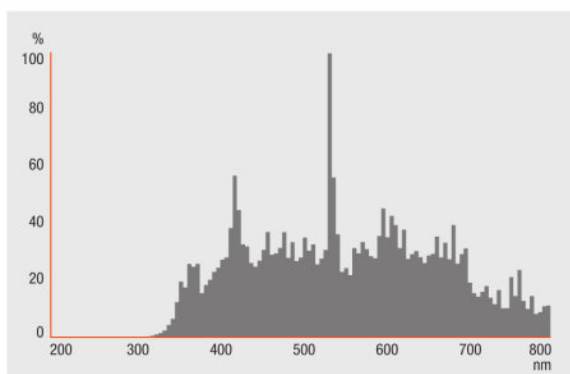
Сертификаты и Стандарты

ZLDV_Energy efficiency class [AGGR]	A
ZLDV_Energy consumption [AGGR]	462 kWh/1000h

Классификация

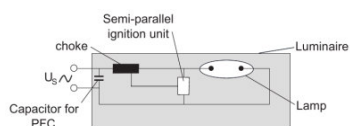
ZLDV_ILCOS [AGGR]	MT/UB-400/960-H/E/SL-E40-62/285
ZLDV_Order reference [AGGR]	HQI-BT 400W/D P

Распределение силы света

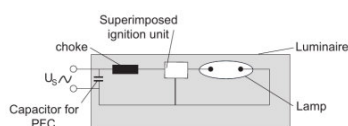


Spectral power distribution

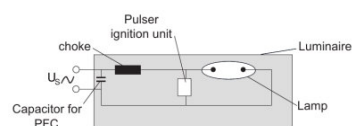
Техническое описание продукта



Circuit diagram



Circuit diagram



Circuit diagram

Данные для заказа

Product code	Описание продукта	Упаковка (цена/шт.)	Размеры (длина x ширина x высота)	Объем	Вес брутто
4008321677860	HQI-BT 400 W/D PRO	Shipping carton box 12 шт. Sleeves	342 mm x 347 mm x 258 mm	30.62 дм ³	3534.00 g

The mentioned product code describes the smallest quantity unit which can be ordered. One shipping unit can contain one or more single products. When placing an order, for the quantity please enter single or multiples of a shipping unit.

Примечание

В заказ могут быть внесены изменения без предварительного уведомления. Проверьте информацию на наличие ошибок. Убедитесь, что информация актуальна.

OSRAM is distribution partner
of LEDVANCE of LAMPS

OSRAM

OSRAM GmbH
Marcel-Breuer-Strasse 6
80807 Munich, Germany